



**PHOTOBENCH**

# MANAGE THE PHOTOMETRIC PERFORMANCE OF LIGHT FITTINGS

THE AIRFIELD LIGHTS ARE ON BUT  
ARE THEY WORKING CORRECTLY?

MALMS PHOTOBENCH

THE MALMS PHOTOBENCH IS  
DESIGNED TO ENSURE ACCURACY  
AND IS INDEPENDENTLY TESTED  
FOR CONFORMANCE WITH THE  
CRITERIA FOR BEAM INTENSITY  
AND ORIENTATION DEFINED IN  
ICAO ANNEX 14, EASA, FAA AC  
150/5345-46E

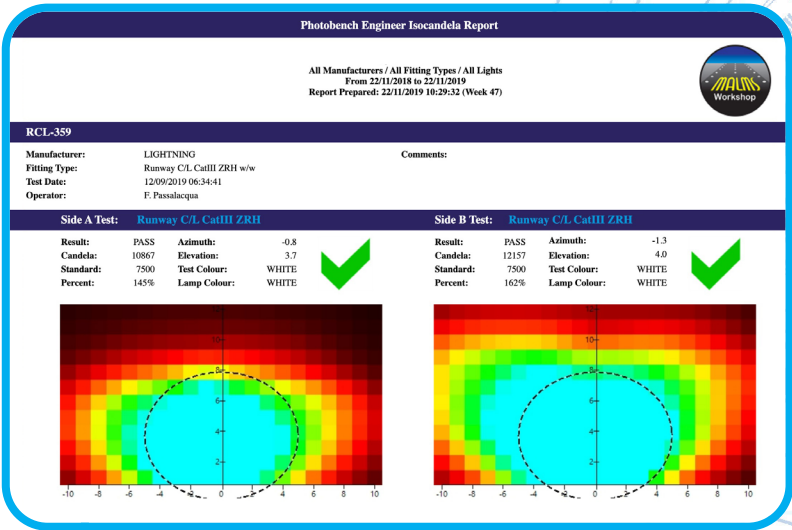




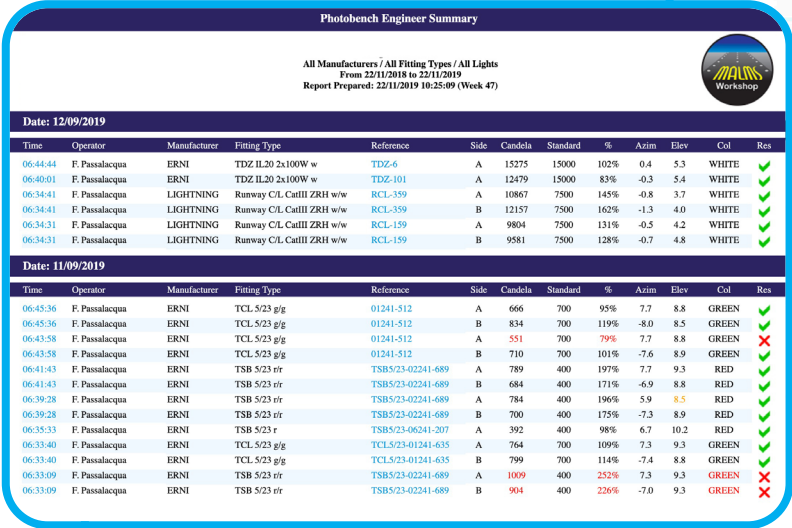
# MALMS DASHBOARD PHOTOBENCH REPORTING

Demonstrating light fixtures are operating safely and in compliance with regulations

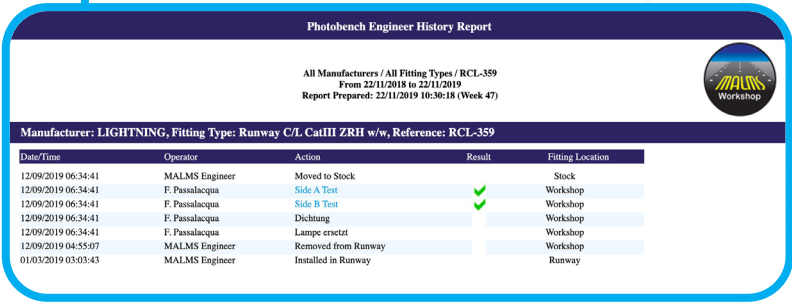
PHOTOBENCH LIGHT FIXTURE STATUS  
Drill down to the current location  
of individual fixtures



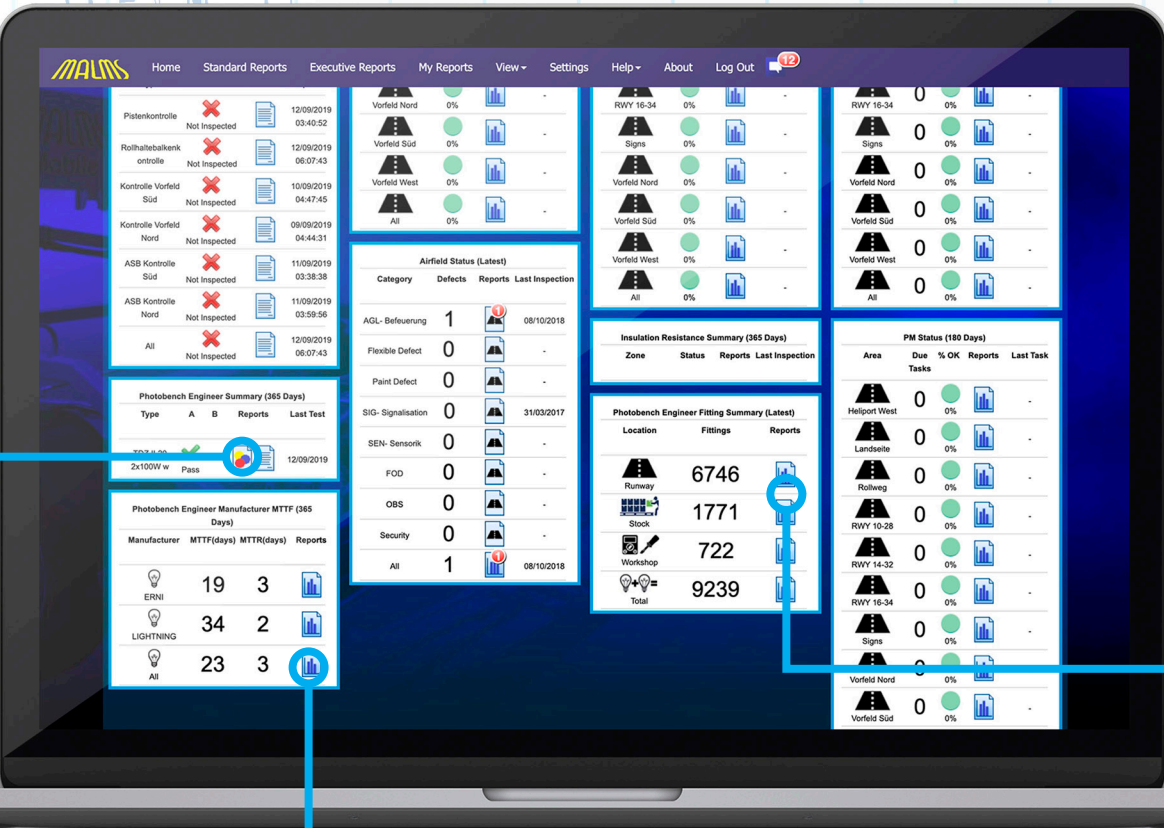
PHOTOBENCH ISOCANDELA REPORT  
Isocandela diagrams and results  
for both sides of a light fixture from  
an individual test.



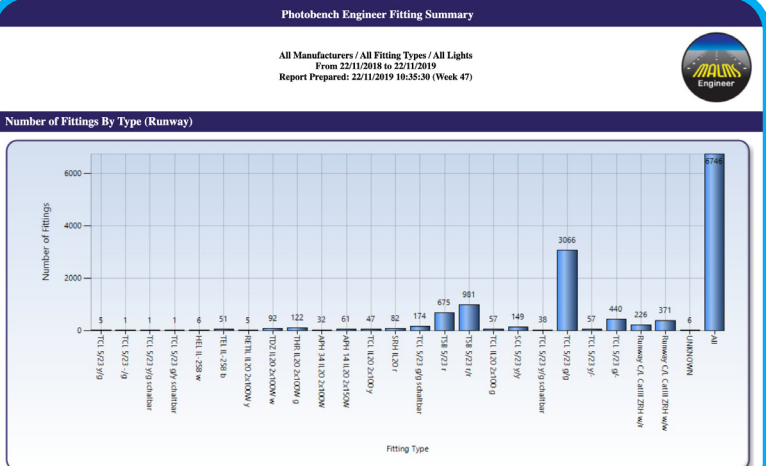
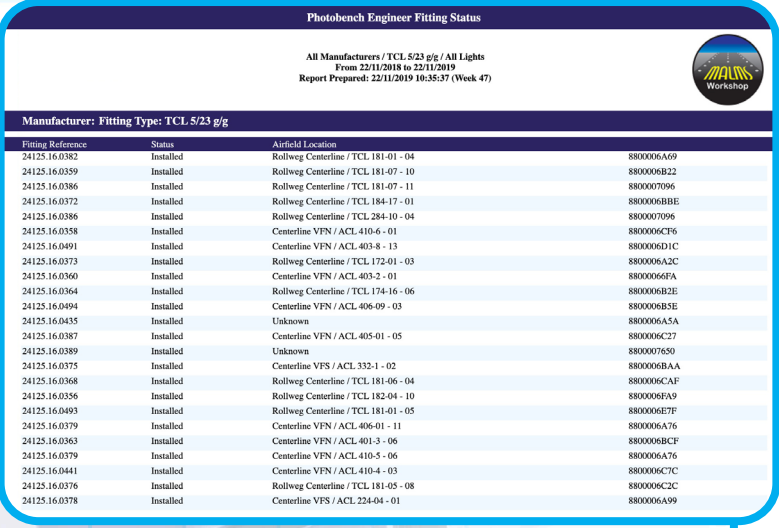
PHOTOBENCH SUMMARY  
Summary of all light fixture tests and results.



PHOTOBENCH HISTORY REPORT  
Log of tests carried out and remedial  
actions taken for a light fixture.

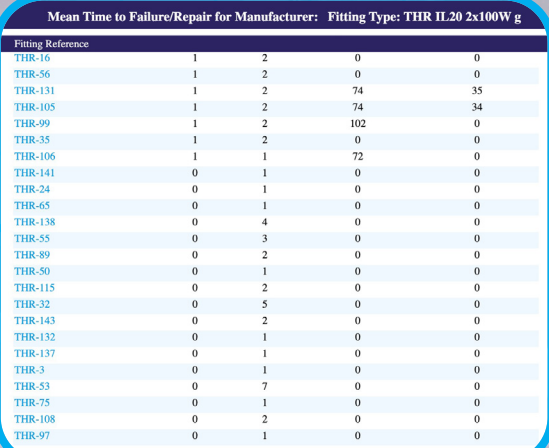


LIGHT FIXTURE TYPE MEAN TIME TO FAILURE  
Mean time to failure and repair  
figures by manufacturer and  
fixture type.



PHOTOBENCH LIGHT FIXTURE SUMMARY  
Track the number of light fixtures on  
the runway, in stock and in the workshop  
by manufacturer and type

MEAN TIME TO FAILURE  
Drill down to MTF and MTTR  
figures for individual light fixtures  
based on the time they spend in the  
ground and in the workshop



Studies have shown that without photometric testing as part of an airports  
quality assurance procedures, many new and refurbished lights fail to achieve  
the serviceability requirements specified in national and international standards  
for beam intensity and orientation before they are installed, meaning airports  
are replacing a defective light with another potentially defective light.

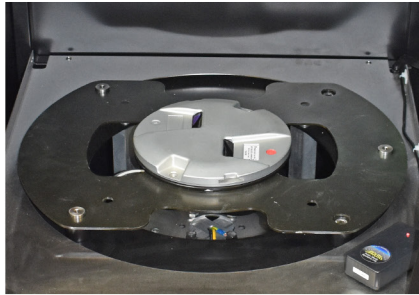


# MALMS PHOTOBENCH

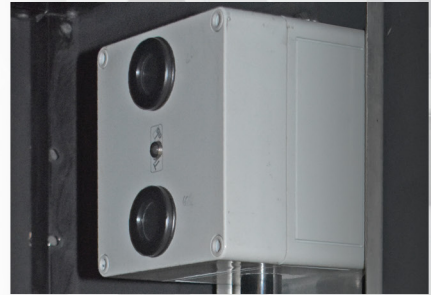
## MEASURING THE PERFORMANCE OF LIGHT FIXTURES



RFID tag reader



Interchangeable size plates



Light Sensor Arrays

The MALMS PhotoBench is specifically designed to quickly and accurately measure the photometric performance of light fixtures. The MALMS PhotoBench will enable every light fixture to be tested before it is installed on the airfield. This will ensure compliance with maintenance and serviceability levels specified in national and international regulations before they are installed on the runway or taxiway.

MALMS PhotoBench is a self-contained system that can measure both LED and Tungsten Halogen fixtures with near-laboratory measurement accuracy yet requires only a small floor area and no special dark room. MALMS PhotoBench incorporates a 4.5 metre test tunnel that can be installed in the AGL maintenance workshop.

### MALMS PHOTOBENCH FEATURES

- Designed to ensure accuracy and is independently tested for conformance with the criteria for beam intensity and orientation defined in ICAO Annex 14, EASA, FAA AC 150/5345-46E.
- Easy to use: Connect the fixture, close the tester door and a pass or fail result is indicated in approximately 30 seconds per light.
- Requires only a small floor area and no special dark room.
- Rugged scientific measurement equipment designed and built for airfield maintenance workshop environments.
- MALMS systems deliver class leading reliability which is why so many systems are in use around the world.
- Data integrity is ensured through automatic monitoring, quality checks and innovative design aimed at preventing operator errors.
- Provides a comprehensive, traceable audit and history trail for airfield lighting and maintenance processes.
- All information is captured and recorded electronically (no manual input).
- Asset tracking and RSS (Rapid Serviceability) options with RFID tagging
- Demonstrates that an airport is operating safely and in compliance with regulations.
- Significant, verifiable cost savings provide a rapid return on investment.
- It is the only AGL workshop photometric test equipment trusted by airfield lighting manufacturers to test ALL their new lights prior to sale.



YOU CAN'T MANAGE WHAT YOU DON'T MEASURE

For more Information contact:

#### Tailor Made Systems Ltd

6 Waterside Business Park, Wheelhouse Road  
Rugeley, Staffordshire, WS15 1LJ

t: +44(0) 1926 479072

e: sales@malms.aero

w: www.malms.aero

#### MALMS Navaid Inc.

481 Pleasant Hill Rd,  
Rutherfordton, NC 28139

t: 001 828 289 0612

e: sales@malmsnavaid.com

w: www.malmsnavaid.com